

Title: Pathogenicity of sublineage BA.5, omicron variant strain comparison with other variant strains of SARS-Cov-2 and seasonal influenza in Japan: Updated until January 2023

Junko Kurita<sup>1</sup>, Tamie Sugawara<sup>2</sup>, Yasushi Ohkusa<sup>2</sup>

<sup>1</sup> Department of Nursing, Faculty of Sports & Health Science, Daitobunka University, Higashimatsuyama, Saitama, Japan

<sup>2</sup> Infectious Disease Surveillance Center, National Institute of Infectious Diseases, Shinjuku, Tokyo, Japan

Keywords: excess mortality; COVID-19; all cause death; stochastic frontier estimation; NIID model; Tokyo; Japan

\*<sup>1</sup> Correspondence to:

Infectious Disease Surveillance Center, National Institute of Infectious Diseases, 1-23-1

Toyama, Shinjuku-ku, Tokyo 162-8640, Japan

Tamie Sugawara [tammy@nih.go.jp](mailto:tammy@nih.go.jp)

### **ICMJE Statement**

Contributors TS was responsible for the organization and coordination of the study. JK was the chief investigator and responsible for the data setting. YO developed the estimation model. All authors contributed to the writing of the final manuscript.

## **Abstract**

**Background:** Sublineage BA.5 of omicron variant strain recorded the highest peak of morbidity and mortality confirmed with test per day in August for the former and September for the latter, 2022.

**Object:** We sought to quantify excess mortality using the National Institute of Infectious Diseases (NIID) model for all cause of death to evaluate pathogenicity of sublineage BA.5 of omicron variant strain.

**Method:** We applied the NIID model to deaths of all causes from 1987 up through the January, 2023 for the whole of Japan and up through October, 2022 for Tokyo.

**Results:** Results in Japan show that 18845, 14133, 8300, 6702, 18426 and 18404 excess mortality was observed in August 2022 to January 2023, which means 16.8, 13.0, 7.0, 13.7 and 12.7 % of the baseline and approximately 74% of total excess mortality during the COVID-19 pandemic. Even in Tokyo, it was 3742 and 36% of total of excess mortality in this pandemic, between August and October, 2022.

**Discussion and Conclusion:** Results may indicate that its pathogenicity was much stronger than other variant strain and seasonal influenza.

## 1. Introduction

Since BA.5 sublineage of Omicron variant strain of SARS-CoV-2 emerged, ECDC reported infectivity of BA.5 was higher than BA.2 by 12-13% in Portugal and South Africa [1]. Even in Japan, it was estimated to be increased by 27% point as of July 13, 2022 [2]. Actually, it recorded the highest peak of morbidity per day among COVID-19 outbreak on August 1, 2022. At the same time, mortality confirmed with test positive per day on September 2, 2022.

However, mortality limited test positive patients might not capture the whole impact of COVID-19 outbreak. Thus, excess mortality of all causes of death

Before COVID-19 outbreak, excess mortality has mainly been used to assess the social effects of influenza activity [3–8]. However, since the emergence of COVID-19, excess mortality attributable to COVID-19 has been attracting attention [9] as a measure of the total effects of the disease because it can reflect cases which have not been identified as test positive.

In Japan, excess mortality was estimated using the National Institute of Infectious Diseases (NIID) model [10], which has been the official procedure for more than ten years. It was applied to two data sources: the national monthly deaths of all causes and the respective weekly pneumonia and influenza deaths in the 21 largest cities and their total. The latter is published regularly in Japanese during the influenza season as <https://www.niid.go.jp/niid/ja/flu-m/2112-idsc/jinsoku/131-flu-jinsoku.html>.

Unfortunately, that publication ceased in March 2020 because it is intended for influenza. The first peak in Japan was April 3, 2020[11]: excess mortality cannot be detected until March. Instead, we applied NIID model to the all causes of death in the whole of Japan to evaluate impact of the outbreak of COVID-19.

## 2. Method

Excess mortality is defined as the difference between the actual number of deaths and an epidemiological threshold. The epidemiological threshold is defined as the upper bound of the 95% confidence interval (CI) of the baseline. The baseline is defined as the number of deaths that are likely to have occurred if an influenza outbreak had not occurred. Therefore, if the actual deaths are fewer than the epidemiological threshold, then excess mortality is not inferred.

The data used for this study were monthly deaths of all causes from 1987 through January 2023 for the whole of Japan and October 2022 for Tokyo [12]. NIID model, the Stochastic Frontier Estimation [13–19], is presented as

$$\log D_t = \alpha + \beta T_t + \gamma T_t^2 + \sum \eta_i M_{it} + \varepsilon_t \quad \text{and} \quad (1)$$

$$\varepsilon_t = \nu_t + |\omega_t|, \quad (2)$$

where  $D_t$  represents all causes of death in month/year  $t$ ,  $T_t$  denotes the linear time trend, and  $M_{it}$  is the dummy variable for a month, which is one if  $t$  is the  $i$ -th month and otherwise zero. Moreover,  $\nu_t$  and  $\omega_t$  are stochastic variables as  $\nu_t \sim N(0, \mu^2)$  and  $\omega_t \sim N(0, \xi^2)$ ; they are mutually independent. Although  $\nu_t$  represents stochastic disturbances,

$\omega_t$  denotes non-negative deaths attributable to influenza. These disturbance terms in this model are parameterized by two parameters:  $\xi/\mu$  and  $(\mu^2 + \xi^2)^{0.5}$ . If the null hypothesis  $\xi/\mu=0$  is not rejected, then the Stochastic Frontier Estimation model is inappropriate.

Study areas were the whole of Japan and its capital, Tokyo. Study period for estimation was from 1987 to January 2023 for the whole of Japan and up through October, 2022 for Tokyo. We adopted 5% as significant level.

### 3. Results

Table 1 summarized the estimation results in the whole of Japan and Table 2 for Tokyo. Figure 1 presents observed deaths, the estimated baseline, and its threshold in Japan. Figure 2 specifically depicts the period since emerging COVID-19. We found 12 and 104 excess mortality in August and October, 2020, and 260, 135, 4106, 5853 and 584 in May, June, August, September and October, 2021. In February, March, May - July 2022, 9705, 5396, 337, 748 and 2214 excess mortality was observed, respectively. These were 0.0, 0.1, 0.2, 0.1, 3.8, 5.5, 0.5, 7.8, 4.2, 0.3, 0.7 and 2.0 % of the baseline.

Especially, in August 2022 to January 2023, 18845, 14133, 8300, 6702, 18426 and 18404 excess mortality was observed, which means 16.8, 13.0, 7.0, 13.7 and 12.7% of the baseline. In these six months, 84811 excess mortality were observed. It means that approximately 74% of total excess mortality during the COVID-19 pandemic was occurred in four months, August 2022 to January 2023.

Figure 3 and 4 showed the estimated result in Tokyo. We found 595 excess mortality in August and 150 excess mortality in September, 76 in October, 458 in

December, 2020, 44 in January, 60 in April, and 762, 942 and 130 in August to October, 2021 which were 6.3, 1.7, 0.8, 4.1, 0.4, 0.6, 8.0, 10.2 and 1.3% of the baseline. Additionally, there were 1427, 1201, 166, 228, 184 and 212 excess mortality in February to July, 2022. It mean 13, 11, 1.6, 2.3, 1.0, and 2.2 % of the baseline. The largest excess mortality in Tokyo during the COVID-19 pandemic was 2069, which was more than 20% of the baseline and 23.8% of total of excess mortality in this pandemic, in August 2022. After August, 970 and 703 excess mortality were recorded in September and October, 2022.

#### **4. Discussion**

We found huge number of excess mortality in August 2022 to January 2023 up to about 85 thousands in the whole of Japan. We supposed it caused by sublineage BA.5 of omicron variant strain. At the same time, only 35 thousand test-confirmed death were reported, which was 41.2% of excess mortality in the same period.

Note that pathogenicity was measured by number of excess mortality in all causes and not by case-fatality rate (CFR). Usually, patients who finally died fighting illness for a while. The length of period until death from infection were different patient by patient. Moreover, the concept of excess mortality does not identify who was counted as excess mortality. Therefore, we cannot define CFR for excess mortality precisely. However, because of highest peak of the number of patients with BA.5 was recorded, we can supposed CFR of BA.5 might be comparable with delta or sublineage BA.1 of omicron

variant strain.

Recently, international comparison of excess mortality caused by COVID-19 was published [20]. In this article, it reported 112 thousands excess mortality in Japan. It was about six times larger than the number of death confirmed COVID-19 infection. Conversely, we found about 27 thousands excess mortality in the same period. It was slightly larger than the number of death confirmed COVID-19 infection, however, it was almost comparable. In this sense, the international comparison may underestimate the baseline and overestimate excess mortality. It is well known bias in the careless estimation of excess mortality [21]. Hence, international comparison might be less precise estimation than this study. Overestimation of excess mortality might mislead to inappropriate policy or counter measures and inflate its disease burden.

## **5. Conclusion**

We found substantial excess mortality since the outbreak of COVID-19 had emerged in the whole of Japan in August, 2022 to January, 2023, up to 85 thousands when delta variant strain prevailed. Even in Tokyo, it occupied 36% of total of excess mortality in this pandemic, between August and October 2022. These observations may indicate its pathogenicity was much stronger than other variant strain and seasonal influenza.

The present study is based on the authors' opinions: it does not reflect any stance or policy of their professionally affiliated bodies.

## **6. Acknowledgement**

We acknowledge Dr. Nobuhiko Okabe, Kawasaki City Institute for Public Health, Dr.Kiyosu Taniguchi, National Hospital Organization Mie National Hospital, and Dr.Nahoko Shindo, WHO for their helpful support.

## **7. Conflict of interest**

The authors have no conflict of interest to declare.

## **8. Ethical considerations**

All information used for this study was published on the web site of MHLW [12]. Therefore, no ethical issue is presented.

## **9. References**

- 1) European Centre for Disease Prevention and Control. Epidemiological update: SARS-CoV-2 Omicron sub-lineages BA.4 and BA.5. <https://www.ecdc.europa.eu/en/news-events/epidemiological-update-sars-cov-2-omicron-sub-lineages-ba4-and-ba5> [accessed on October 22, 2022]
- 2) National Intitute of Infectious Diseases. Updated Situation of COVID-19 Outbreak (July 13,2022) <https://www.niid.go.jp/niid/ja/2019-ncov/11309-covid19-ab90th.html> (in Japanese) [accessed on October 20, 2022]



- 3) Lin HC, Chiu HF, Ho SC, Yang CY. Association of influenza vaccination and reduced risk of stroke hospitalization among the elderly: a population-based case-control study. *Int J Environ Res Public Health* 2014; 11: 3639-49.
- 4) Asghar Z, Coupland C, Siriwardena N. Influenza vaccination and risk of stroke: Self-controlled case-series study. *Vaccine*. 2015; 33: 5458-63.
- 5) Riedmann EM. Influenza vaccination reduces risk of heart attack and stroke. *Hum Vaccin Immunother* 2013; 9: 2500.
- 6) Kwok CS, Aslam S, Kontopantelis E, Myint PK, Zaman MJ, Buchan I, Loke YK, Mamas MA. Influenza, influenza-like symptoms and their association with cardiovascular risks: a systematic review and meta-analysis of observational studies. *Int J Clin Pract*. 2015;69:928-37.
- 7) Muhammad S, Haasbach E, Kotchourko M, Strigli A, Krenz A, Ridder DA, Vogel AB, Marti HH, Al-Abed Y, Planz O, Schwaninger M. Influenza virus infection aggravates stroke outcome. *Stroke*. 2011;42:783-91.
- 8) Assad F, Cockburn WC, Sundaresan TK. Use of excess mortality from respiratory diseases in the study of influenza. *Bull WHO* 1973; 49: 219-33.
- 9) Sugawara T, Ohkusa Y. Comparison of Models for Excess Mortality of Influenza Applied to Japan. *Journal of Biosciences and Medicines*, 2019, 7, 13-23.

doi:10.4236/jbm.2019.76002

- 10) Kurita J, Sugawara T, Ohkusa Y. Mobility data can explain the entire COVID-19 outbreak course in Japan. medRxiv 2020.04.26.20081315; doi: <https://doi.org/10.1101/2020.04.26.20081315>
- 11) Ministry of Health, Labour and Welfare. Preliminary statistics on demographics <https://www.mhlw.go.jp/toukei/list/81-1a.html> (in Japanese) [accessed on January 16, 2022]
- 12) Aiger AD, Lovell K, Schmitdt P. Formulation and estimation of stochastic frontier production function models. *Journal of Econometrics* 1977; 21-37.
- 13) Jondrow J, Lovell K, Materov S, Schmidt P. On the estimation of technical inefficiency in the stochastic frontier production function model. *Journal of Econometrics* 1982; 233-9.
- 14) Li T, Rosenman R. Cost inefficiency in Washington Hospitals: A stochastic frontier approach using panel data, *Health Care Management Science* 2001; 4: 73-81.
- 15) Newhouse JP. Frontier Estimation: How useful a tool for health economics? *Journal of Health Economics* 1994; 13: 317-22.
- 16) Shelton Brown H. Managed care and technical efficiency. *Health Economics*. 2003; 12: 149-58.

- 17) Jacobs R. Alternative methods to examine hospital efficiency: Data envelopment analysis and stochastic frontier analysis. *Health Care Management Science*. 2001; 4: 103-15
- 18) Rosko MD. Cost efficiency of US hospitals: A stochastic frontier approach. *Health Economics*. 2001; 539-51.
- 19) COVID-19 Excess Mortality Collaborators. Estimating excess mortality due to the COVID-19 pandemic: a systematic analysis of COVID-19-related mortality, 2020-21. *Lancet*. 2022 ;399:1513-36.
- 20) Sugawara T, Ohkusa Y. Comparison of Models for Excess Mortality of Influenza Applied to Japan. *Journal of Biosciences and Medicines*, 2019, 7, 13-23.  
  
doi:10.4236/jbm.2019.76002

Table 1 NIID Model estimation results since 1987 until January 2023 in Japan

Explanatory variables	Estimated coefficients	<i>p</i> -value
Constant	11.12	<0.0004
Time trend	0.001537	<0.0004
Time trend <sup>2</sup>	0.0000009763	0.423
January	0.07075	<0.0004
February	-0.05631	<0.0004
March	-0.01671	0.053
April	-0.1027	<0.0004
May	-0.1247	<0.0004
June	-0.2126	<0.0004
July	-0.1776	<0.0004
August	-0.1710	<0.0004
September	-0.2083	<0.0004
October	-0.1197	<0.0004
November	-0.08768	<0.0004
$\xi/\mu$	2.386	<0.0004
$(\mu^2 + \xi^2)^{0.5}$	0.04934	<0.0004

Note: The number of observations was 424. The estimated log likelihood was 915.5.  $\xi^2$  denotes the variance of the non-negative disturbance term.  $\mu^2$  is the variance of the disturbance term.

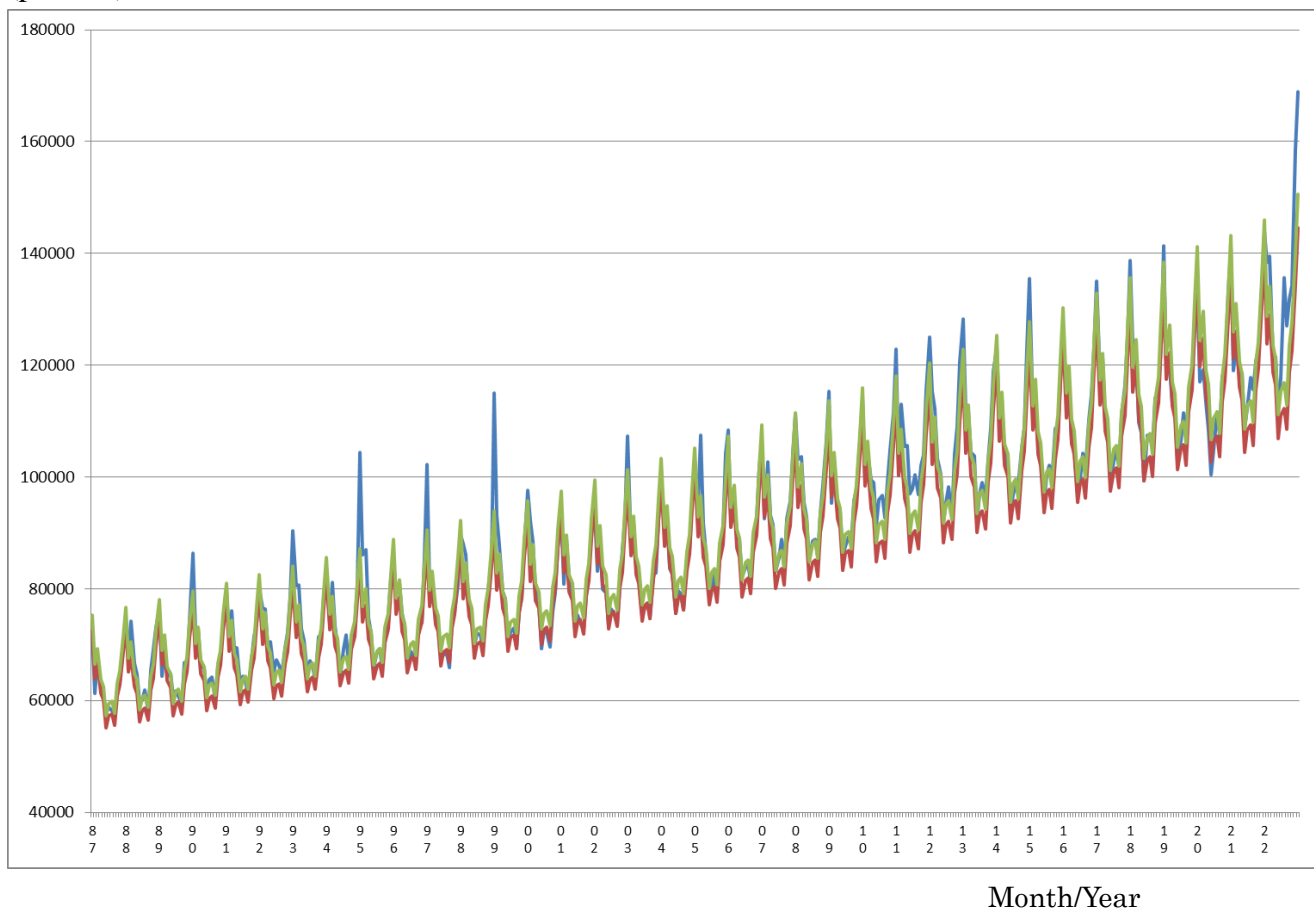
Table 2 NIID Model estimation results since 1987 until October 2022 in Tokyo

Explanatory variables	Estimated coefficients	<i>p</i> -value
Constant	8.55	<0.0004
Time trend	0.00186	<0.0004
Time trend <sup>2</sup>	-0.726*10 <sup>-6</sup>	0.001
January	0.0759	<0.0004
February	0.137	<0.0004
March	0.0292	0.015
April	0.0479	<0.0004
May	-0.0271	0.111
June	-0.0584	<0.0004
July	-0.111	<0.0004
August	-0.0664	<0.0004
September	-0.0719	<0.0004
October	-0.108	<0.0004
November	-0.0253	0.102
$\xi/\mu$	2.44	<0.0004
$(\mu^2 + \xi^2)^{0.5}$	0.0684	<0.0004

Note: The number of observations was 424. The estimated log likelihood was 817.9.  $\xi^2$  denotes the variance of the non-negative disturbance term.  $\mu^2$  is the variance of the disturbance term.

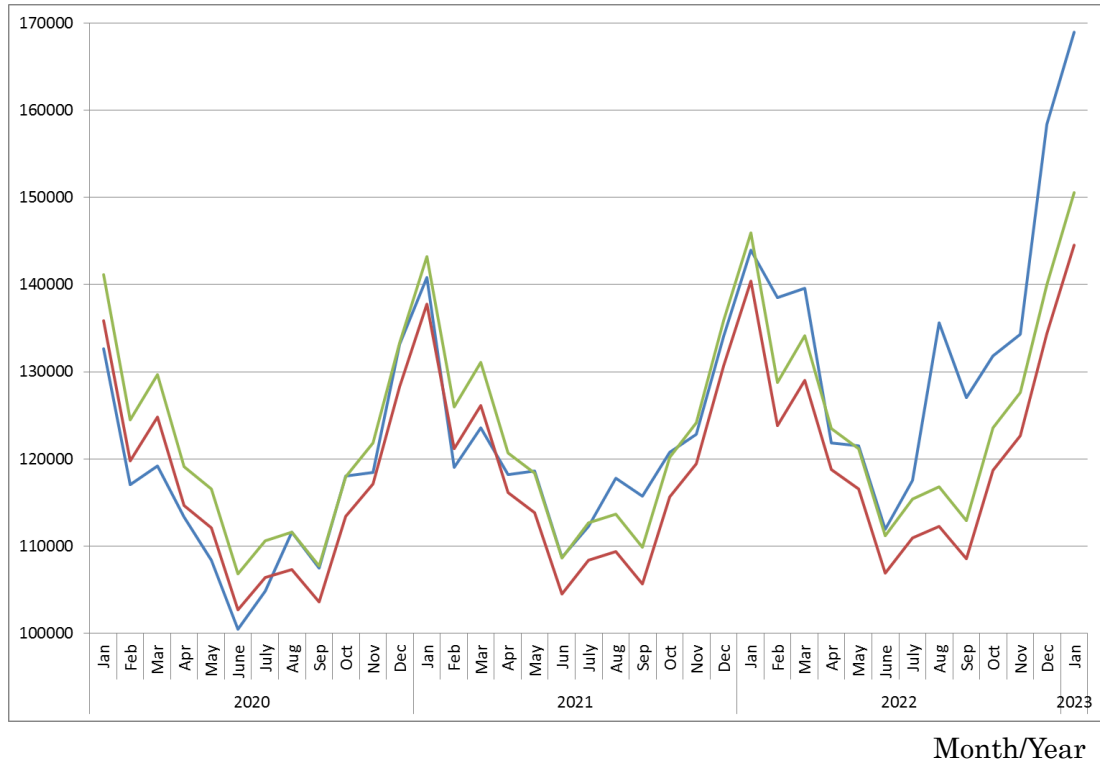
Figure 1: Observations of the estimated baseline and threshold since 1987 until January 2023 in Japan

(persons)



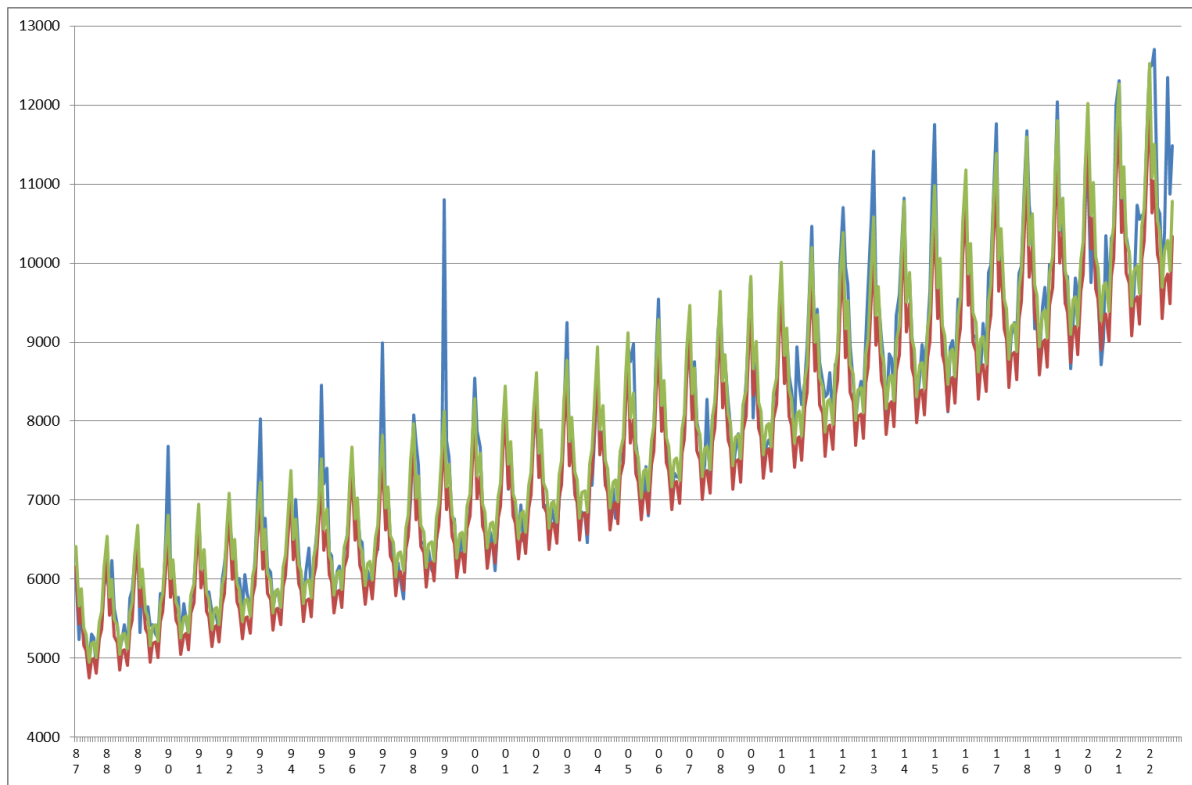
Note: The blue line represents observations. The red line represents the estimated baseline. The green line shows its threshold.

Figure 2: Observation of the estimated baseline and threshold since January 2020 in Japan (persons)



Note: The blue line represents observations. The red line represents the estimated baseline. The green line shows its threshold.

Figure 3: Observations of the estimated baseline and threshold since 1987 until October, 2022 in Tokyo (persons)

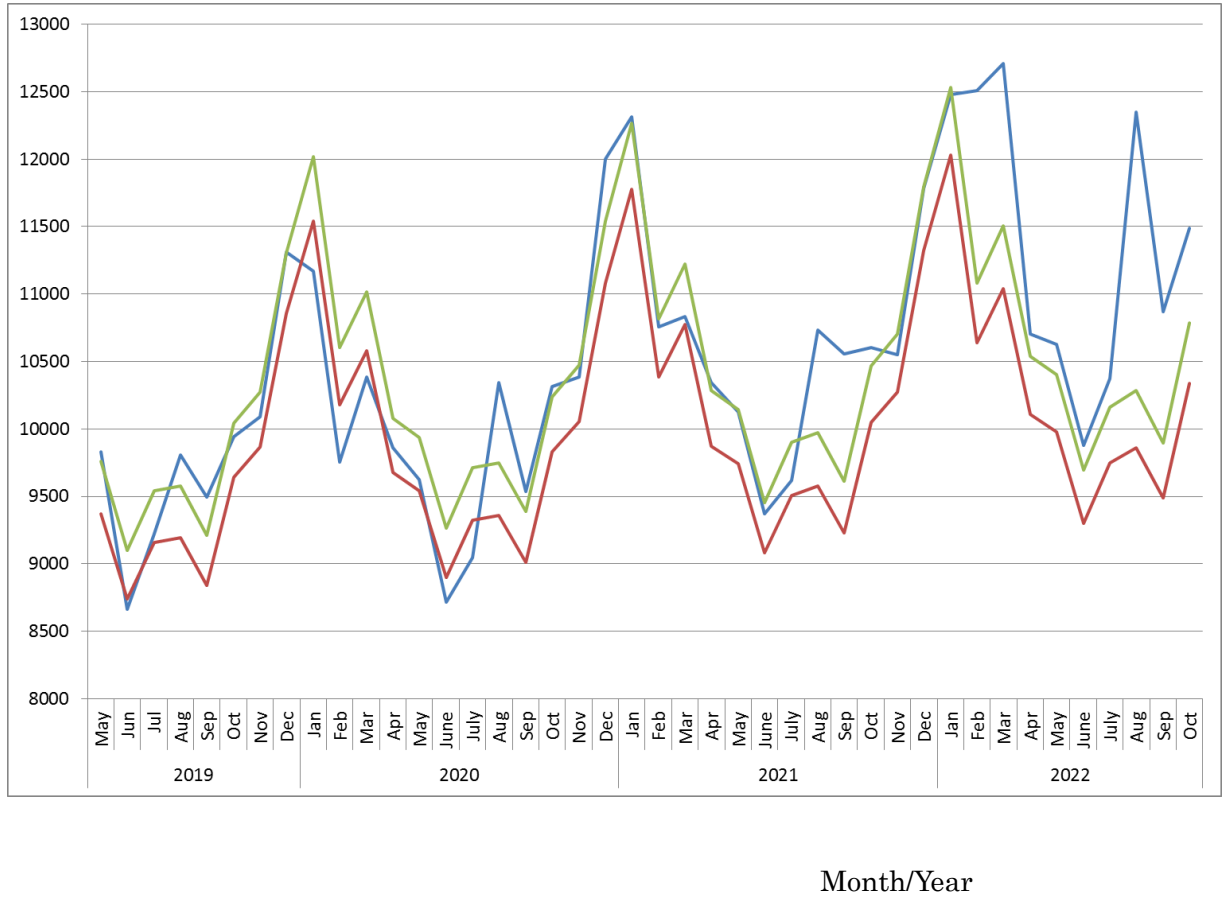


Month/Year

Note: The blue line represents observations. The red line represents the estimated baseline. The green line shows its threshold.



Figure 4: Observation of the estimated baseline and threshold since May 2019 until October, 2022 in Tokyo (persons)



Note: The blue line represents observations. The red line represents the estimated baseline. The green line shows its threshold.