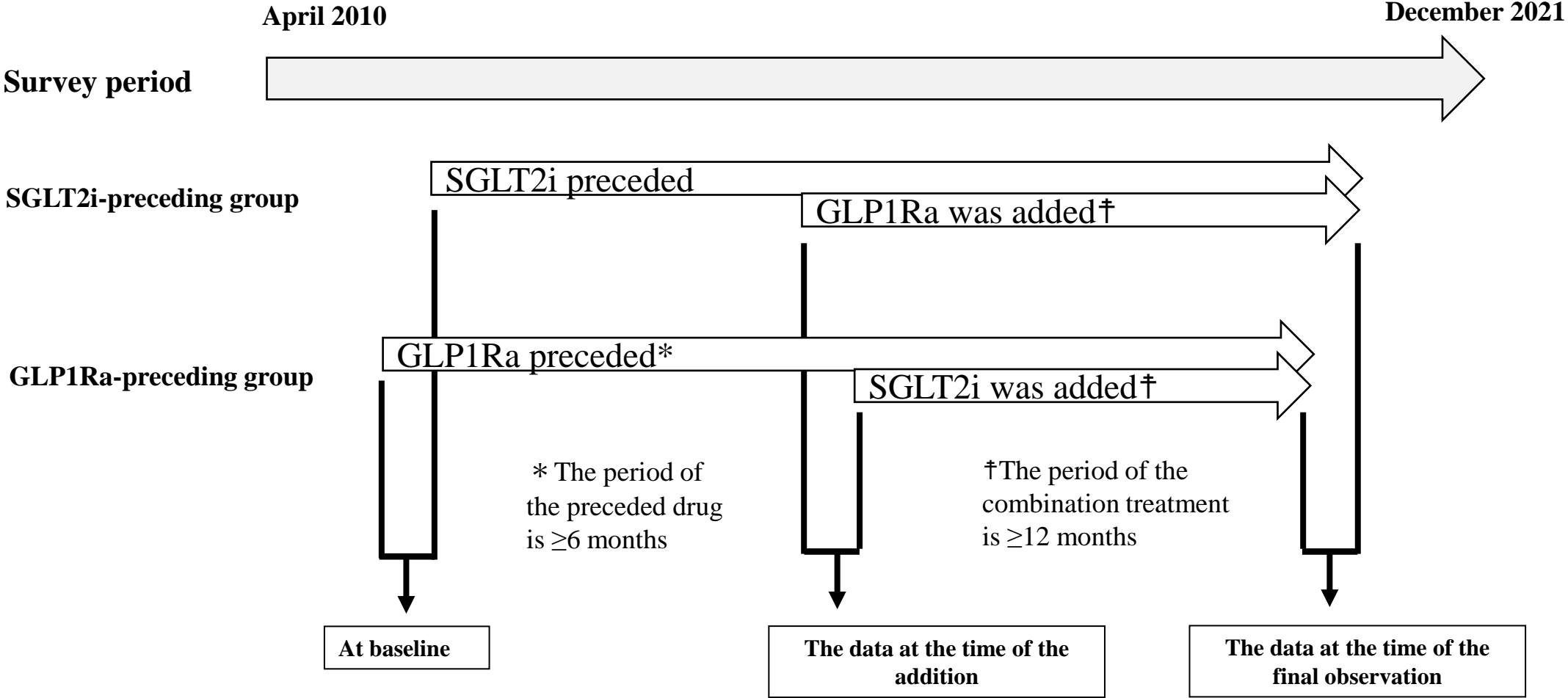
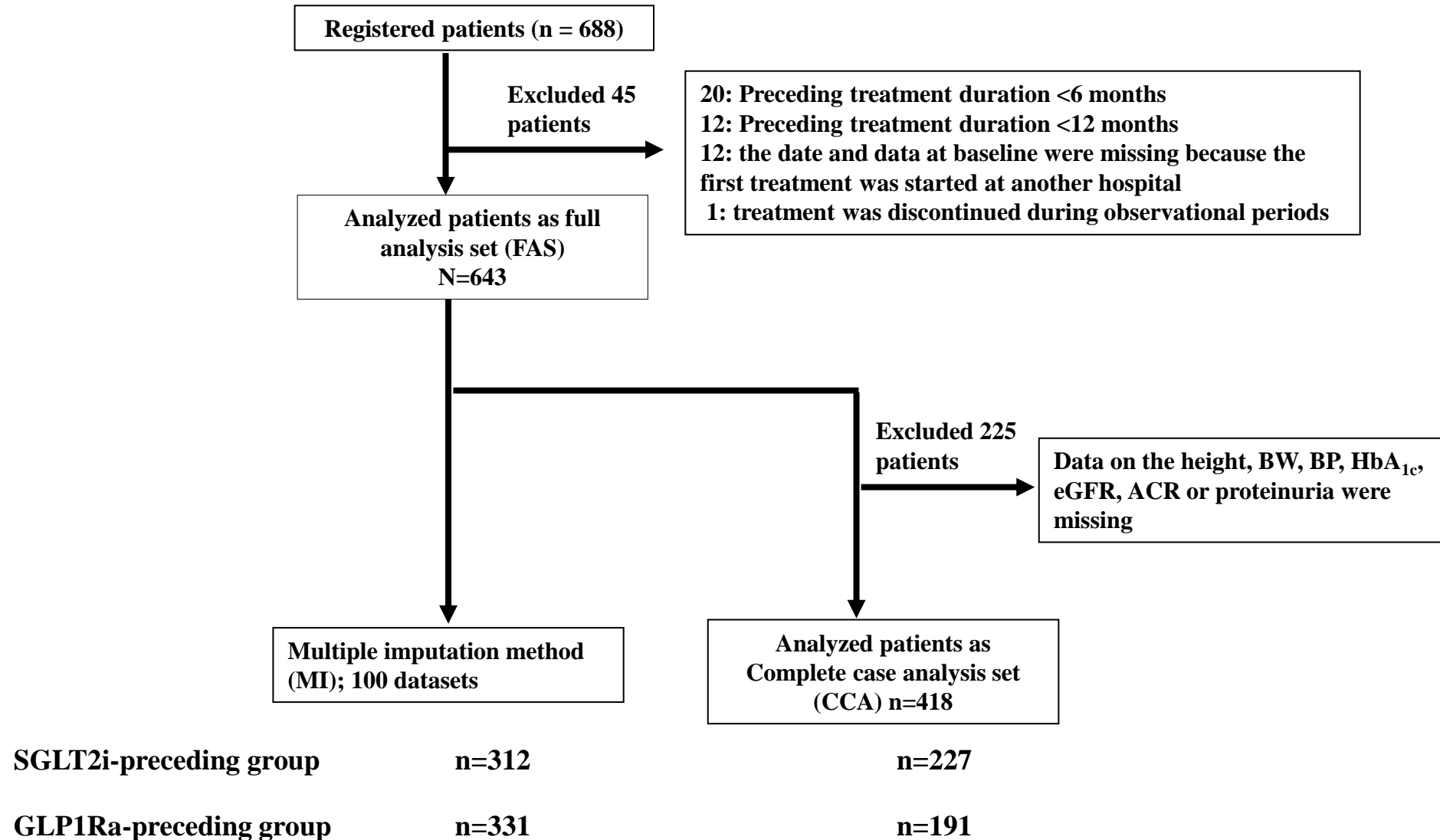


Supplementary Figure S1. Schematic of the study design



Abbreviation: GLP1Ra, glucagon-like peptide 1 receptor agonist; PS, propensity score; SGLT2i, sodium-glucose co-transporter inhibitor

Supplementary Figure S2. Schematic depiction of the study participants

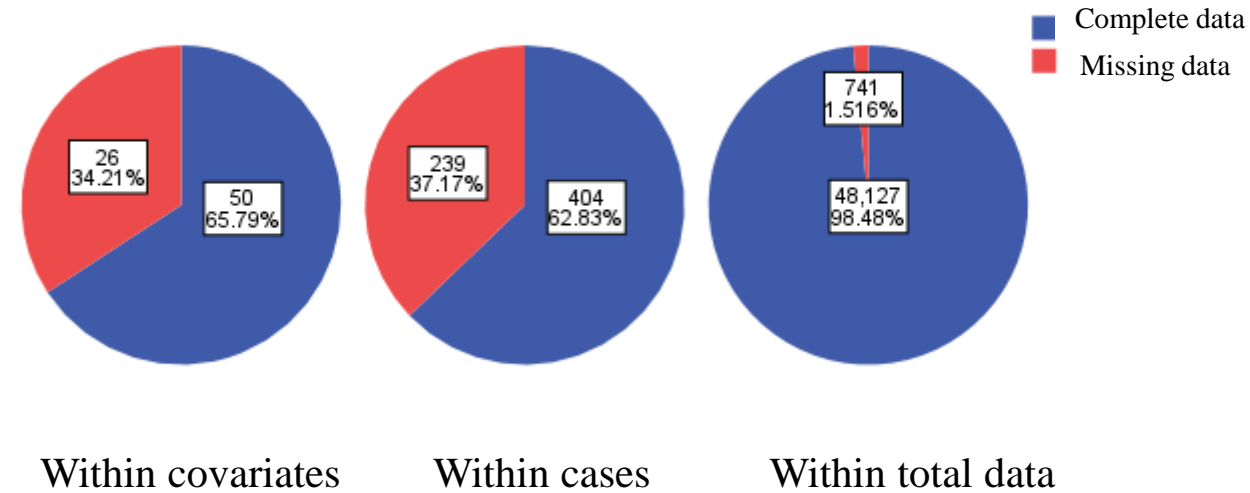


Abbreviation: ACR, urine albumin-to-creatinine ratio; BP, blood pressure; BW, body weight; CCA, complete set analysis; eGFR, estimated glomerular filtration rate; FAS, full analysis set; GLP1Ra, glucagon-like peptide 1 receptor agonist; HbA_{1c}, glycated hemoglobin A1c; MI, multiple imputation; SGLT2i, sodium-glucose co-transporter inhibitor

Supplementary Figure S3. Breakdown of the missing data

	n	Minimum	maximum	Number missing	Missing rate (%)	
At baseline	Height	641	133	189.6	2	0.3
	BW (kg)	620	36.5	218.2	23	3.6
	SBP (mmHg)	606	83	236	37	5.8
	DBP (mmHg)	604	38	122	39	6.1
	HbA _{1c} (%)	642	5.4	15.6	1	0.2
	eGFR (ml/min/1.73 m ²)	642	20.2	198.2	1	0.2
	ACR (mg/gCr)	500	0.3	7981.0	143	22.2
	AST (IU/dL)	630	7	212	13	2.0
	ALT (IU/dL)	636	5	203	7	1.1
	Platelets (× 10 ⁴ /μl)	622	7.0	82.7	21	3.3
At the time of the addition	BW (kg)	606	33.0	182.3	37	5.8
	SBP (mmHg)	599	83	210	44	6.8
	DBP (mmHg)	598	42	114	45	7.0
	eGFR (ml/min/1.73 m ²)	640	15.7	188.6	3	0.5
	ACR (mg/gCr)	510	0.1	9495.2	133	20.7
	AST (IU/dL)	636	10	144	7	1.1
	ALT (IU/dL)	640	6	225	3	0.5
At the time of the final observation	Platelets (× 10 ⁴ /μl)	626	7.7	66.6	17	2.6
	BW (kg)	633	26.0	145.2	10	1.6
	SBP (mmHg)	628	74	191	15	2.3
	DBP (mmHg)	628	40	109	15	2.3
	HbA _{1c} (%)	642	5.3	15.9	1	0.2
	ACR (mg/gCr)	544	1.0	7875.3	99	15.4
	AST (IU/dL)	640	7	128	3	0.5
	ALT (IU/dL)	641	4	226	2	0.3
Platelets (× 10 ⁴ /μl)	623	6.1	60.8	20	3.1	

The summary of the missing data



Abbreviation: ACR, urine albumin-to-creatinine ratio; ALT, alanine aminotransferase; AST, aspartate aminotransferase; BW, body weight; DBP, diastolic blood pressure; eGFR, estimated glomerular filtration rate; HbA_{1c}, glycated hemoglobin A1c; SBP, systolic blood pressure

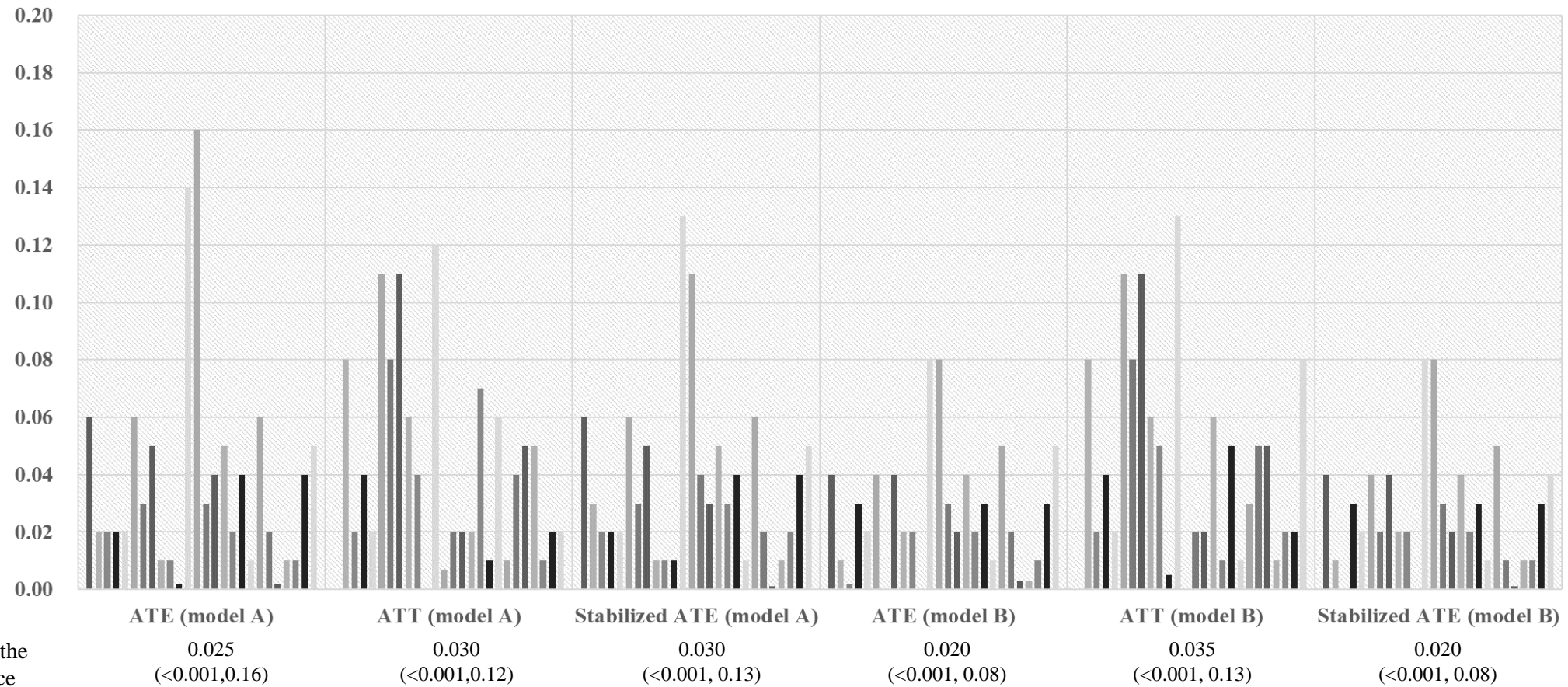
Supplementary Figure S4. Calculation of the weight using the propensity score

	The SGLT2i-preceding patients	The GLP1Ra-preceding patients
ATE weight	1/PS	1 / (1 - PS)
ATT weight	1	PS / (1 - PS)
Stabilized ATE weight	p / PS	(1 - p) / (1 - PS)

The p value is the ratio of the SGLT2i-preceding patients to total patients.

Abbreviations: ATE, average treatment effect; ATT, average treatment effect on the treated; GLP1Ra; glucagon-like peptide 1 receptor agonist; PS, propensity score; SGLT2i; sodium-glucose co-transporter inhibitor

Supplementary Figure S5. Standardized differences of each IPW model

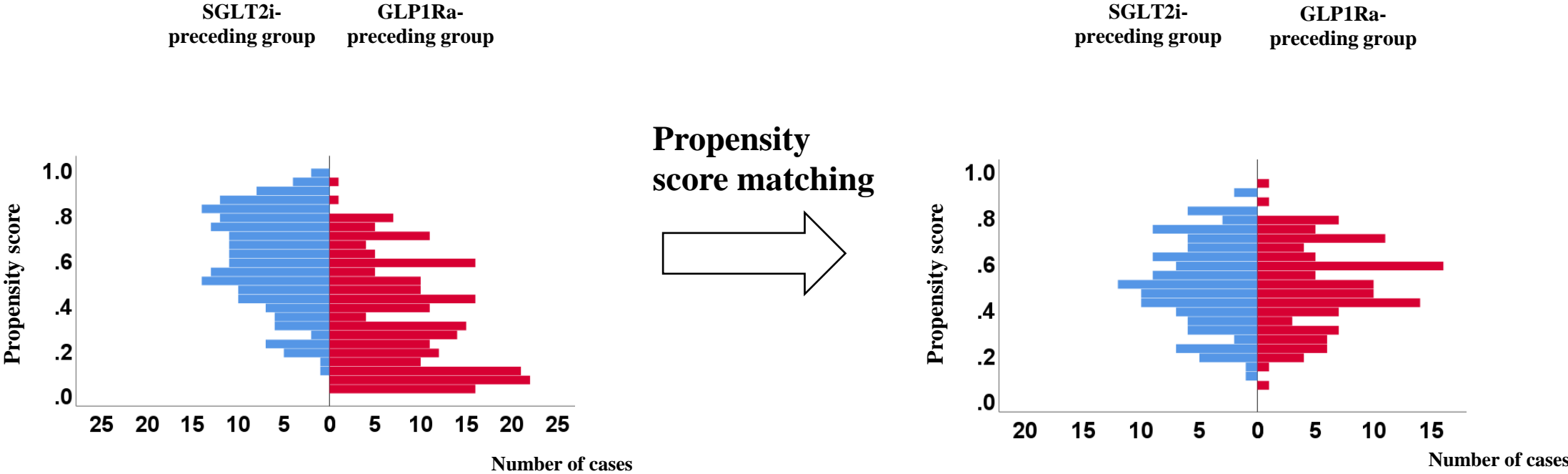


- Age
- Sex
- History of DM
- BW
- BMI
- SBP
- DBP
- MAP
- HbA_{1c}
- eGFR
- LnACR
- Duration of the preceding treatment
- Duration of the combination treatment
- Sulphonylurea
- Metformin
- Insulin
- Pioglitazone
- α GI
- Glinide
- RAS inhibitor
- CCB
- Bblocker
- MRB
- Thiazide

Truncation of the 99th percentile is utilized in model A, and trimming by $0.05 \leq PS \leq 0.95$ is utilized in model B.

Abbreviations: α GI, alpha glucosidase inhibitor; BMI, body mass index; BW, body weight; CCB, calcium channel blocker; DBP, diastolic blood pressure; DM, diabetes mellitus; eGFR, estimated glomerular filtration rate; HbA_{1c}, glycated hemoglobin A_{1c}; IPW, inverse probability weighting; LnACR, logarithmic value of urine albumin-to-creatinine ratio; MAP, mean arterial pressure; MRB, mineral corticoid receptor blocker; PS, propensity score; RAS, renin aldosterone system; SBP, systolic blood pressure; SU, sulphonyl urea

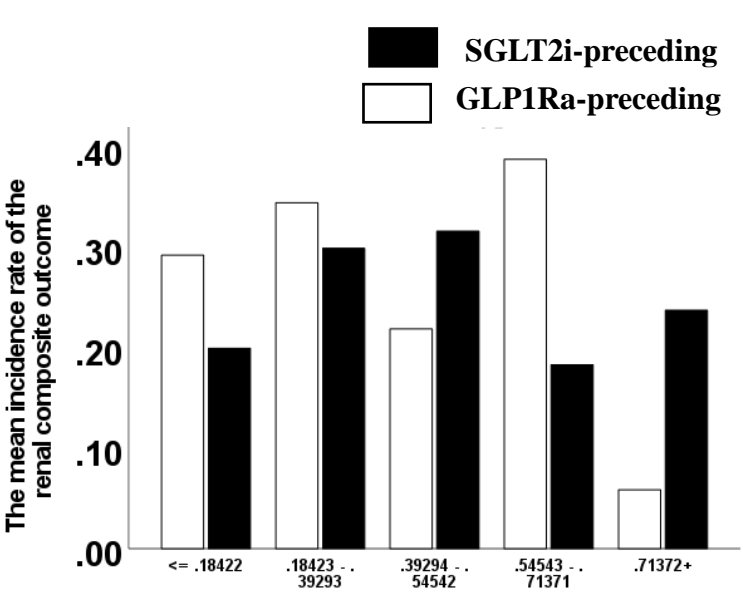
Supplementary Figure S6. Distribution of the propensity score before and after matching in the CCA



Abbreviations; CCA, complete case analysis; GLP1Ra; glucagon-like peptide 1 receptor agonist; SGLT2i; sodium-glucose co-transporter inhibitor

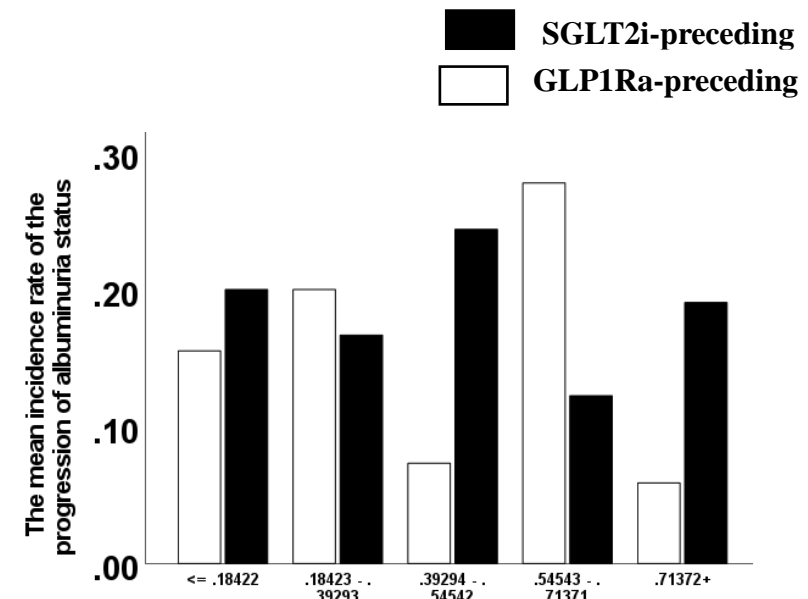
Supplementary Figure S7. Mean incidence of the renal outcomes based on the quintiles of all patients in the CCA

a) Renal composite outcome



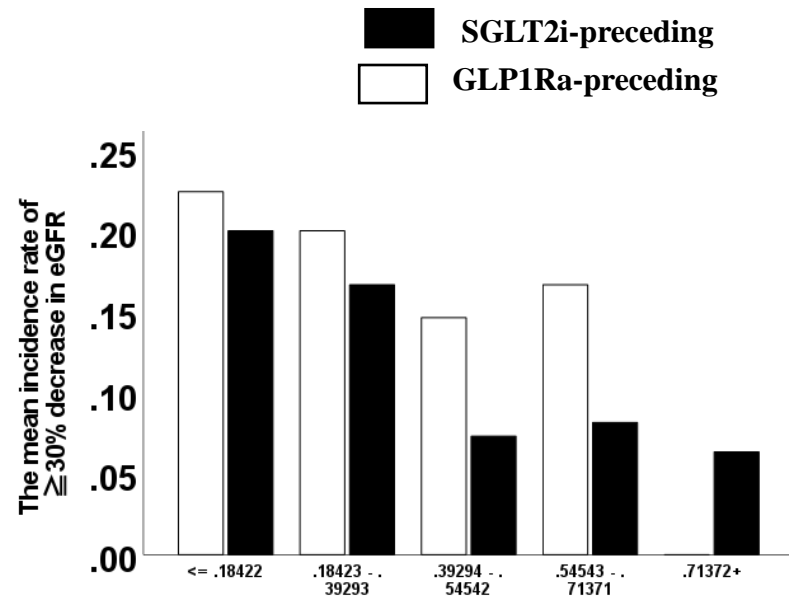
OR= 0.93 [95%CI, 0.56, 1.53], p=0.76

b) Progression of ACR status



OR=1.15 [95%CI, 0.65, 2.07], p=0.63

c) ≥30% decrease in the eGFR



OR= 0.69 [95%CI, 0.35, 1.37], p=0.29

Abbreviations: ACR, urine albumin-to-creatinine ratio; CCA, complete set analysis; CI, confidence interval; GLP1Ra, glucagon-like peptide 1 receptor agonist; OR, odds ratio; ; sodium-glucose co-transporter inhibitor